

6/5/99

Kelly Allen

WT 1-11-16
19635 Jan 10

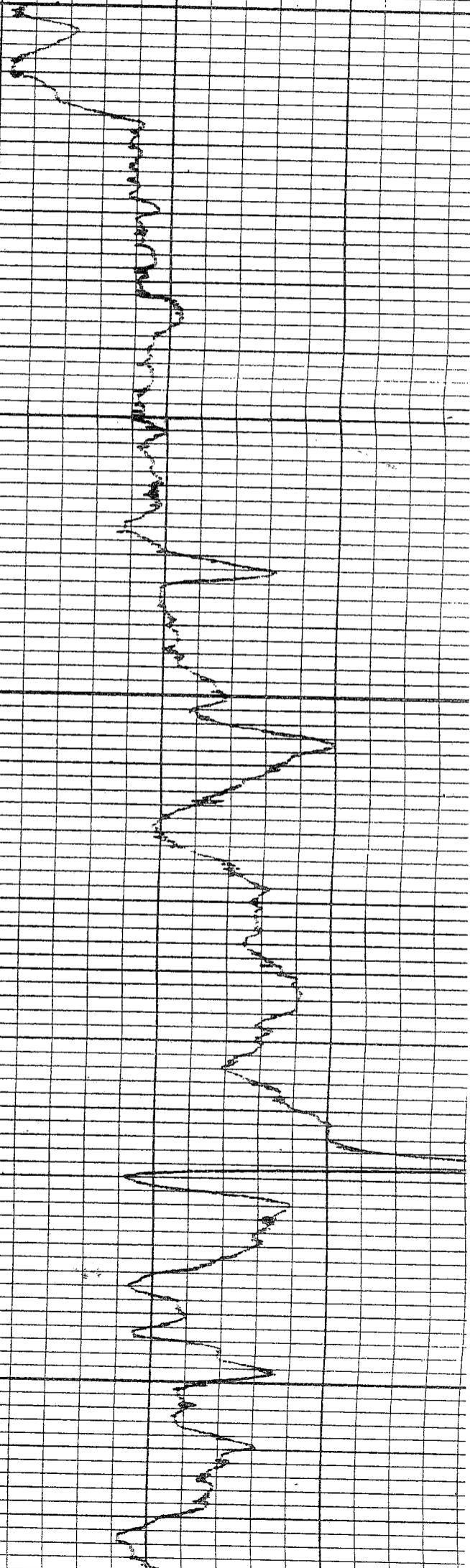
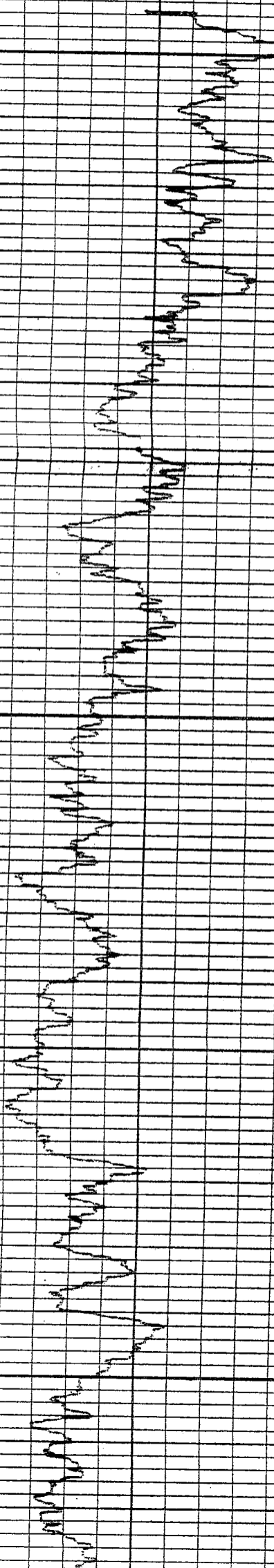
hog

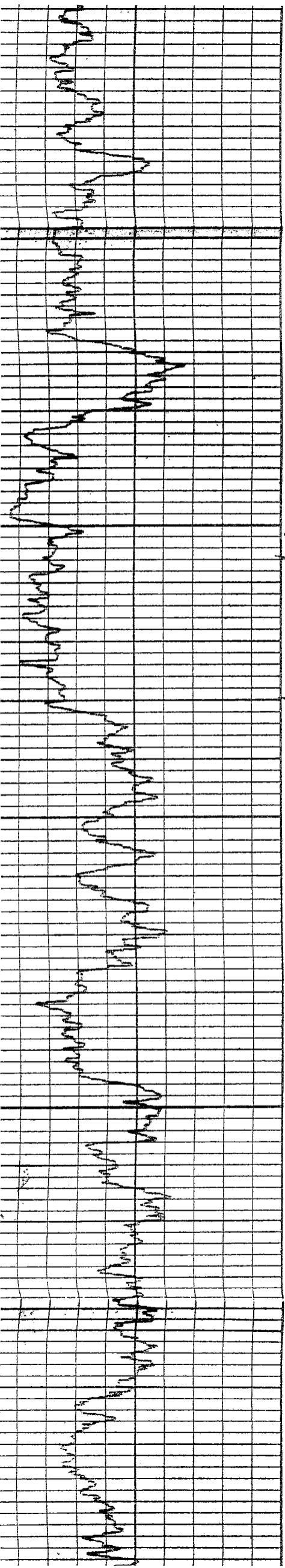
BUCKET ACROSS ROAD
FROM SIDE

2000f

2100

2200

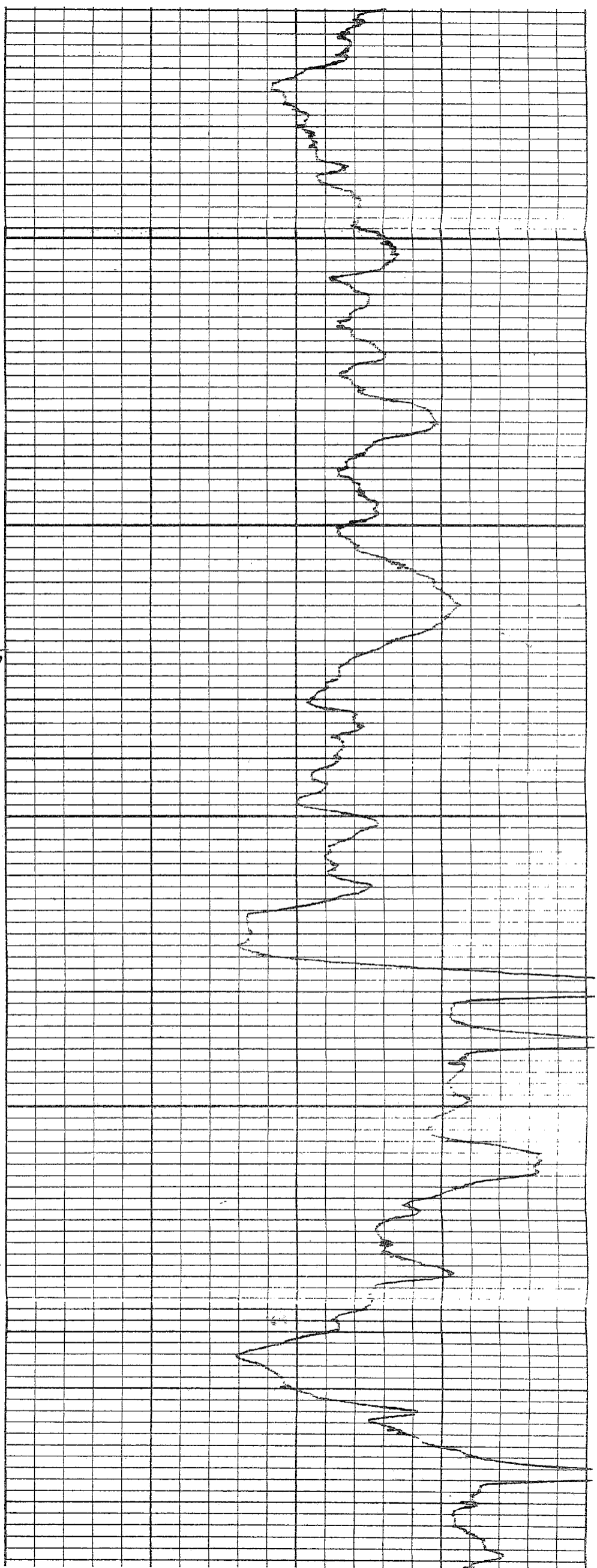


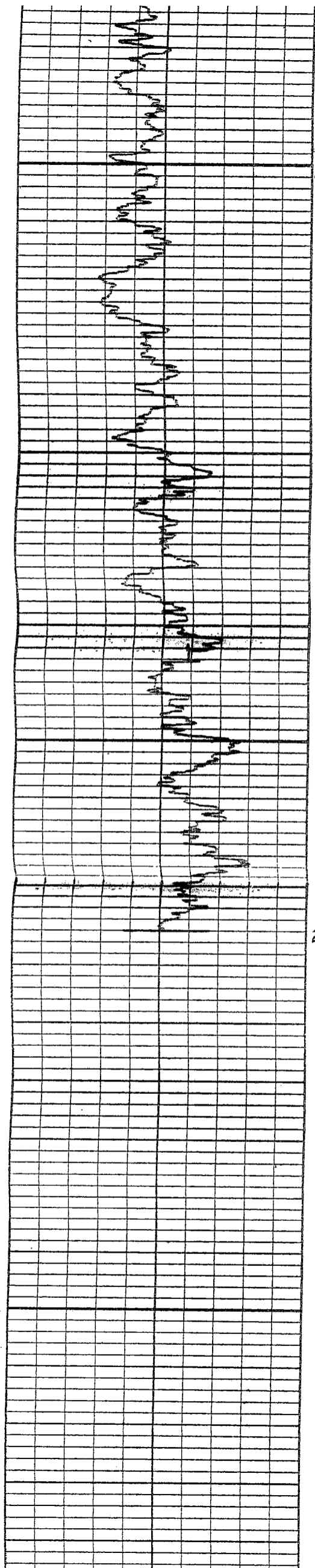


2300

PerF
Int.
40 shots

2:

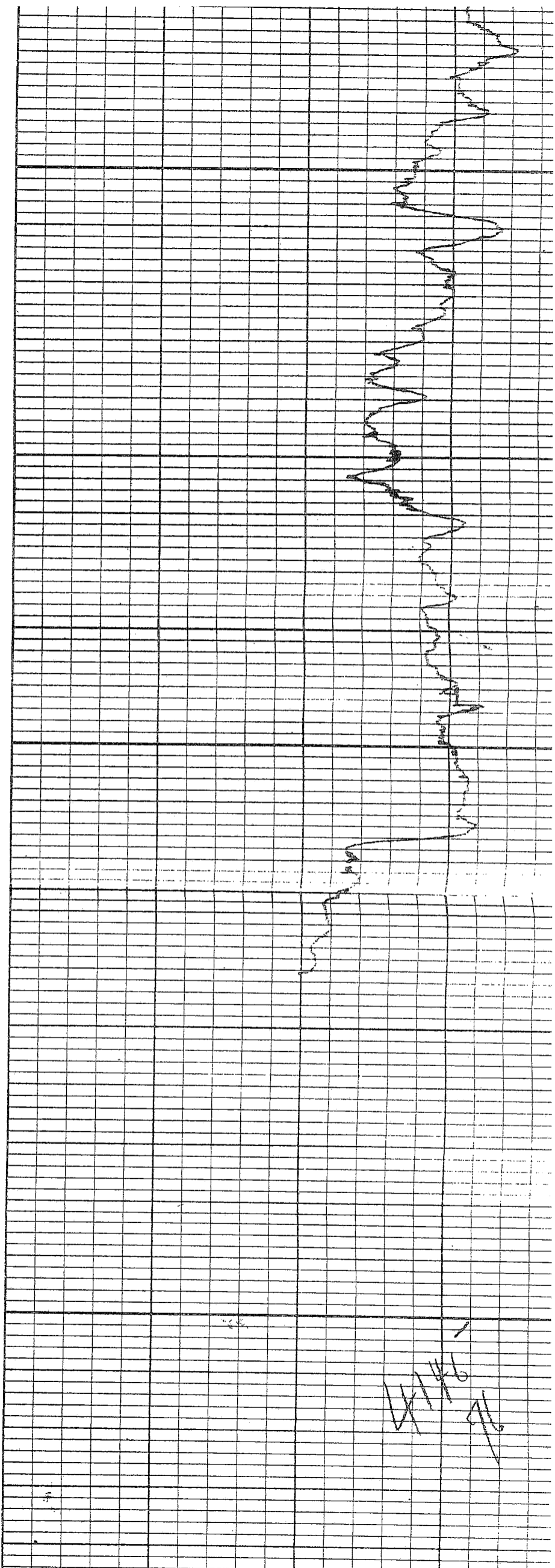




2500

2600

2640



4/14/6
76

EQUIPMENT TOOLS

DIS 300 DIS 300 DIS 245 SLS 459

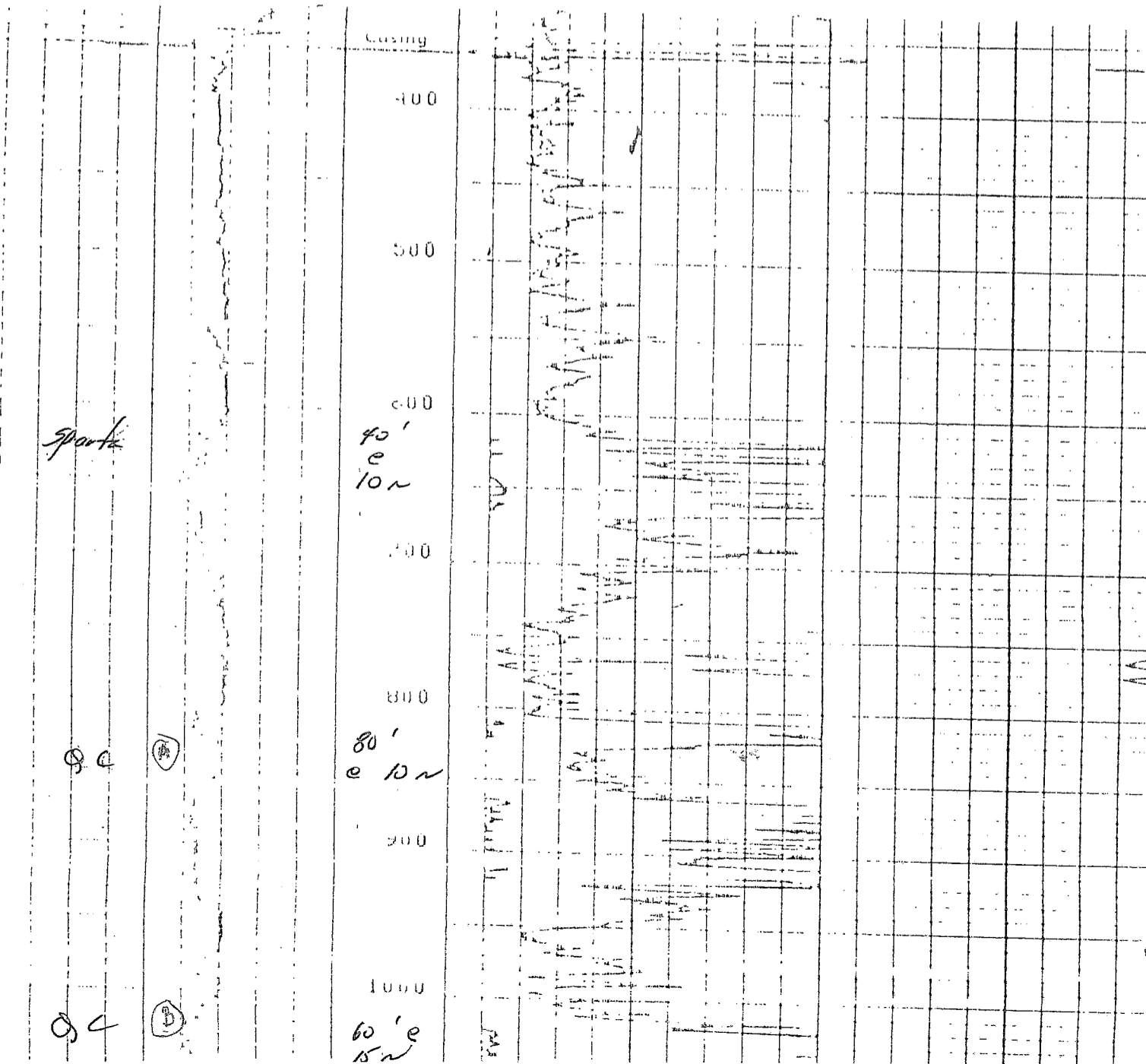
ALL INTERPRETATIONS ARE OPINIONS BASED ON INFERENCES FROM ELECTRICAL OR OTHER TEST DATA, AND WE CANNOT, AND DO NOT GUARANTEE THE ACCURACY OF SUCH INTERPRETATIONS, AND WE SHALL NOT, EXCEPT IN THE CASE OF GROSS NEGLIGENCE ON OUR PART, BE LIABLE OR RESPONSIBLE FOR ANY LOSS OF PROFITS, DAMAGES OR EXPENSES INCURRED OR SUSTAINED BY ANYONE RESULTING FROM ANY INTERPRETATION MADE BY ANY OF OUR OFFICERS, AGENTS OR EMPLOYEES. THESE INTERPRETATIONS ARE ALSO SUBJECT TO OUR GENERAL TERM AND CONDITIONS AS SET OUT IN OUR CURRENT PRICE SCHEDULE.

FILE

				100 (MMH)		
				0.0	10.00	
				SFLA (MMH)		
				0.0	2.000	
				SFLA (MMH)		
				0.0	10.00	4000
50.00	SP	20.00				
50.00	SP	20.00	5000			
50.00	0000	20.00	10000			

FILE

3



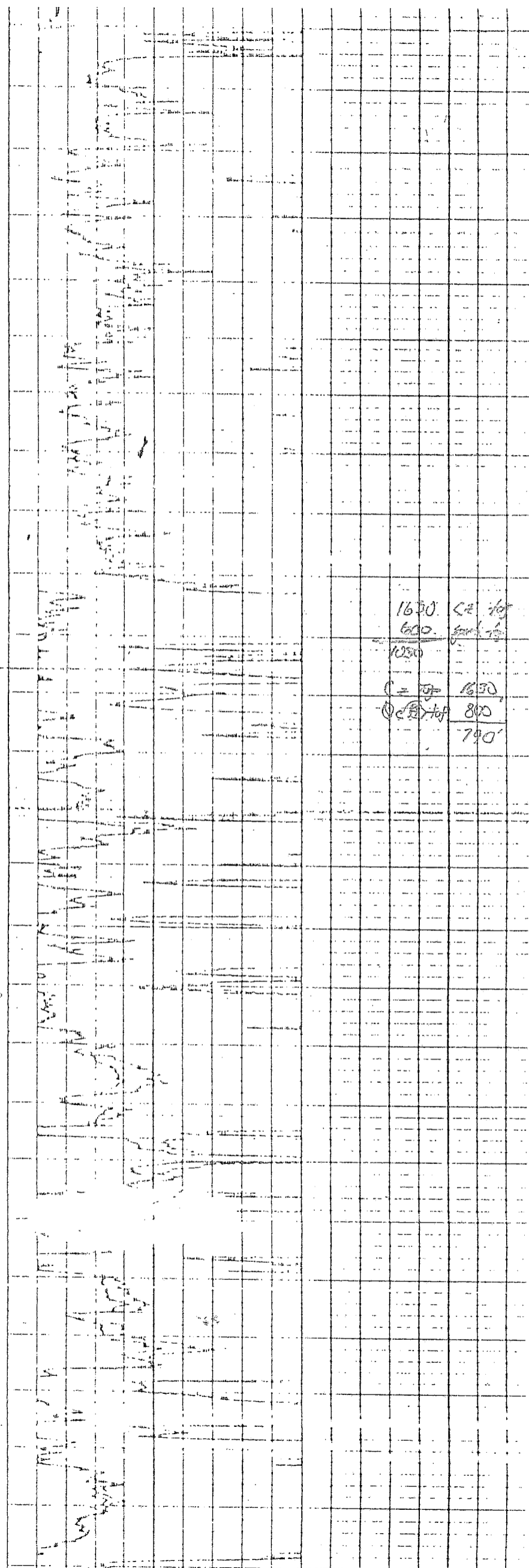
1100
1200
1300
1400
1500
1600
1700
1800
1900
2000
2100
2200
2300
2400

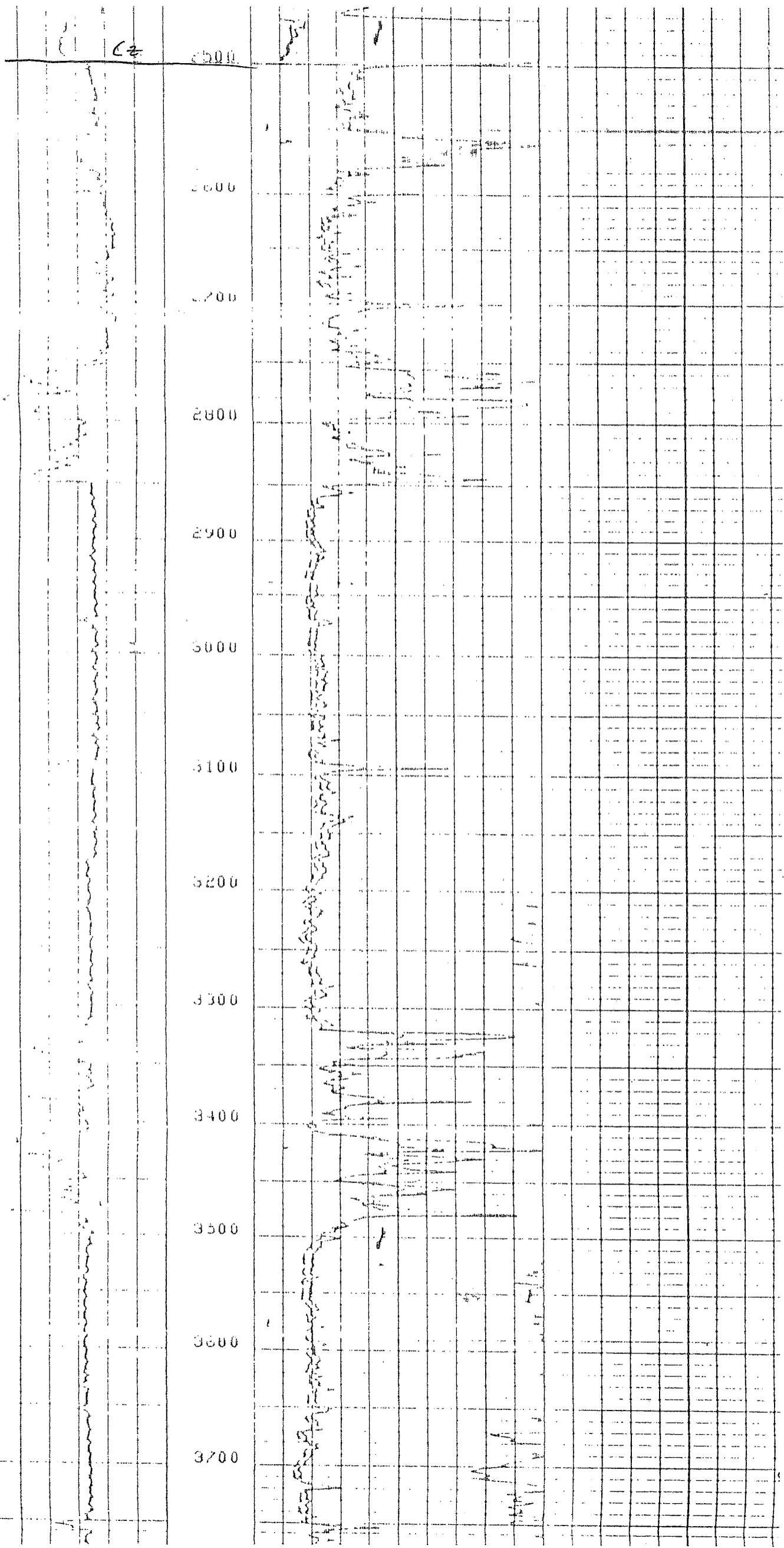
Rek law
60'
@ 15 n
1600

1630	600	1050
1630	800	790

Calc 120

Calc gross = 2500 - 1630 = 870
Net = 870 - 185 = 685 @ 30 n





DUAL INDUCTION/BHC SONIC/CALIPER

COMPANY: ENERGY RESOURCES ELL. GAS CORP RECEIVED

WELL: MC-MILLAN #2 AUG 23 1982

FIELD: HEDCOB
 COUNTY: CONDELL
 STATE: TEXAS
 LOCATION: USA
 NOT AVAILABLE TO STALLER 4-427

SEC: TWP: RGE:

2105 53 1/2 2000 11 1/2 S 2000

PERMANENT DATUM: GL
 ELEV. OF PERM. DATUM: 369.0'
 LOG MEASURED FROM: RKE
 12.7' ABOVE PERM. DATUM
 LOG MEASURED FROM: RKE
 ELEVATIONS -
 KBI: 369.7'
 DFI: 383.7'
 GL: 369.0'

PROGRAM:
 TAPE NO:
 SERVICE:
 ORDER NO:
 147121

OTHER SERVICES -
 DENSITY
 NEUTRON
 GAMMA-RAY

DATE: 5 AUG 81
 RUN NO: 1

DEPTH-DRILLER: 4900.0'
 DEPTH-LOGGER: 4483.0'
 BTM. LOG INTERVAL: 4481.0'
 TOP LOG INTERVAL: 360.0'

CASING-DRILLER: 362'
 CASING-LOGGER: 360'
 CASING: 8 5/8

BIT SIZE: 7 7/8

TYPE FLUID IN HOLE: LIGHT
 DENSITY: 9.3 LB/G
 VISCOSITY: 43.0 S
 PH:
 FLUID LOSS:
 SOURCE OF SAMPLE: CIR PIT
 RM: 3.630 OHMH AT 75.0 DF
 RMF: 3.080 OHMH AT 75.0 DF
 RMC: 5.400 OHMH AT 75.0 DF
 SOURCE RMF/RMC: MEAS/CALCULATE
 RM AT BHT: 2.038 OHM AT 139. DF
 RMF AT BHT: 1.729 OHM AT 139. DF
 RMC AT BHT: 3.032 OHM AT 139. DF
 TIME CIRC. STOPPED: 1300
 TIME LOGGER ON BIT: 2200
 MAX. REC. TEMP: 139.0 DF
 LOGGING UNIT NO: 8029
 LOGGING UNIT LOG: 100100
 RECORDED BY: FELICE
 WITNESSED BY: PHILIPS

